

PLAY

The Play feature of this DVD lets you play any one of 16 featured music videos, or Play All of them in a loop. Songs 1-8 appear on the first page; to show songs 9-16, press the [RIGHT] button and select the right arrow at the top of the screen.

Press the [MENU] button to return to the Play menu, or press [TOP MENU] (or [TITLE] on some DVD remote controls) to return to the main menu where you can choose Interactive Play.

INTERACTIVE PLAY

The Interactive Play feature of this DVD is an immersive audio visual cityscape where you control the phantom-like Pixelman. As he travels along the gap between the world of the living and the world of the dead, you can explore the dark urban landscape, discovering different music video experiences. Your exploration of the city will help uncover Pixelman's history and hopefully help him escape his grey limbo.

Getting Started

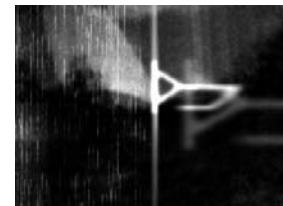
To navigate Pixelman's passage through the city and access music videos, use the four [ARROW] keys and the [ENTER] (or [PLAY]) button on your DVD remote control. Have a look at your remote so you can access these 5 buttons quickly. (figure 1)



(figure 1)

Navigating

You may be lost when you first enter the city, but you'll soon learn to easily navigate Pixelman. As he walks along, the interface controls are beamed into his eyes from the giant buildings in the distance — some type of mind control no doubt! Navigation prompts are arrows: left, right, up or down. (figure 2)



(figure 2)

These let Pixelman jump to one of three different locations in the city (there is also a secret fourth location you can unlock). If you see an arrow prompt and want to jump to a new location, press the corresponding [ARROW] button on your remote. But be quick, the navigation prompts don't last for long!

Playing Music Videos

Since your primary goal is to find and play music videos, you should look for different [ENTER] prompts, which contain a ghost image of a music video surrounded by arrows. (figure 3)



(figure 3)

When you see these symbols, press [ENTER] (or [PLAY]) on your remote and Pixelman will jump into the music video. Be quick, the music video prompts also don't last long! Once the music video is over, Pixelman will continue on his lonesome way. He will usually walk for about one minute before you start seeing [ENTER] prompts. Before this, you will be shown navigation prompts, but only use them if you want to jump to another location.

There are 26 music videos (about 2½ hours) and a special 30-minute audio track to discover in the city. So take your time, let the atmosphere wash over you, and enjoy the experience!

QUICK GUIDE

- [ARROW] keys take you to different locations in the city. Normally [LEFT] or [RIGHT], but [UP] and [DOWN] are also used sometimes.
- [ENTER] accesses music videos (may be [PLAY] on some remotes).
- [MENU] during a video returns to your previous location (may be [RETURN] on some remotes).
- [TOP MENU] returns you to the main menu where you can choose normal Play (may be [TITLE] on some remotes).
- There is also a secret key that unlocks different remixes and a fourth bonus location.
- For more hints and maps, visit www.dance51.com/morf